



Mission
& Flight



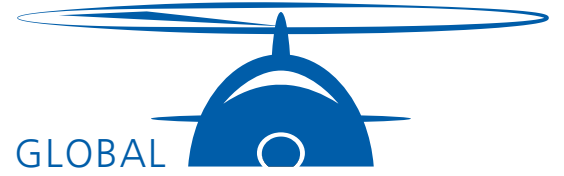
Ground
& Support



Maintenance
& Systems



Service
& Advising



GLOBAL
AVIATION
SYSTEMS

...the aviation experts

Source



Who are we

TARGET-ORIENTED • PROJECT-RELATED • MANUFACTURER-INDEPENDENT

Global Aviation Systems GmbH, based in Donauwörth, Bavaria, is your partner in aviation. Our products are used on the vast majority of aircraft types.

With our four business units Ground & Support, Maintenance & Systems, Mission & Flight and Service & Advicing, we accompany your project from the early development phase through to safe operation. To a large extent, we are manufacturer-independent and can therefore focus entirely on your needs. In addition to always having satisfied customers, precisely understanding your needs is also one of our most important goals.

We are firmly convinced that this is the only way to achieve the best result for you. To achieve this, we rely on highly trained technicians who are specialists in their respective fields. Our most important goal is your satisfaction and sustainable partnerships based on clear business ethics.

Ground & Support



You will get the most suitable ground handling solution for your aircraft from this business unit. We ensure that you move your aircraft safely, apply power or hydraulic pressure, and fill it efficiently with gases or liquids.

Maintenance & Systems



For maintenance work on rotary and fixed-wing aircraft, we provide you with the necessary know-how as well as the appropriate tools and systems. We have placed a major focus on the measurement and elimination of vibrations and on non-destructive testing.

Mission & Flight



This business unit supports you in airborne reconnaissance projects from data acquisition to distribution and evaluation of all relevant (meta-) data.

Service & Advicing



For each product you receive from us, we have developed a service and support concept. This concept usually starts with the regular calibrations as well as trainings and covers the entire period of use. In addition, we are your consulting service provider who supports and advises you on your questions.



GROUND SERVICE EQUIPMENT

StartStick: Safe launching wherever you are!

The StartStick is an ultra lightweight battery pack for engine starting. Due to the lithium-ion technology, this external power unit is very portable and several starts are possible with one charge. In addition, it is possible to recharge the StartStick on your own on-board power supply and thus take off from anywhere.



Visit us at:
www.start-stick.eu

	StartStick
Voltage:	28 V
Weight:	4,8 kg / 6,6 kg / 9,2 kg
Capacity:	10 / 15 / 20 Ah
Continuous current:	200 – 400 A
Max. Power:	800 bis 1600 A

Your advantages at a glance

- Weight savings
- Can be used at any time
- Battery monitoring with microcontroller
- Up to 6 starts possible



StartStick-adapter for lever arm relief
(up to 90°)





GPU and Coolspool for start

These portable batteries are specially designed for aircraft launching.

Due to the particularly handy and compact design and the high power, these devices allow several convenient launches of helicopters and airplanes.

Your advantages at a glance

- Conserve on-board batteries
- Multiple launches per day
- Reliable take off



	12 V GA Pack	12 / 24 V GA Pack
Voltage:	12 V	12/24 V
Power:	2400 A	
Capacity:	26 Ah	
Weight:	12 kg	25 kg

Optionally with crocodile clips, Piper and Nato plug



	GPU 1700	GPU 1700 Twin	GPU 2400	GPU 2400 Twin
Voltage:	24 V			
Power:	1700 A	3400 A	2450 A	4900 A
Capacity:	32 Ah	64 Ah	43 Ah	86 Ah
Weight:	25 kg	61 kg (Trolley included)	34 kg	85 kg (Trolley included)

Specially developed for outdoor use



	Coolspool 17	Coolspool 29	Coolspool 29 Twin
Voltage:	26 V / 28 V		
Power:	1800 A	2400 A	4800 A
Capacity:	16 Ah	26 Ah	52 Ah
Weight:	18 kg	28 kg	70 kg (Trolley included)

26 V versions for voltage-sensitive aircraft



Continuous power supplies

The power supplies serve to relieve the on-board batteries and are very suitable for maintenance work on the avionics.

Due to their compact and lightweight design and the switchable voltage, they are very useful for database updates and avionics training.



Your advantages at a glance

- Permanently supply Lfz with power
- Conserve on-board batteries
- For updates and training
- Mains connection required

	PS 30	PS 50	PS 100	PS 300
Voltage:	28 V	28 V / 31,5 V	28 V	28 V
Power:	30 A	50 A	100 A	300 A

Designed for smaller business aircraft up to large helicopters

Groundpower combination units

The GPU 1500/40 (Twin) and the Coolspool Combination (CSC) are combination units consisting of a power supply for continuous power with mains connection and batteries for engine start.

Thus, after preparation in the hangar, the same unit can be used for starting without any problems.



CSC



GPU

	CSC 100	CSC 200	CSC 300
Voltage:	28 V		
Continuous current:	100 A	200 A	300 A
Power:	2400 A	4800 A	5000 A
Capacity:	43 Ah	86 Ah	114 Ah
Weight:	86 kg	115 kg	147 kg

	GPU 1500/40 (Twin)
Voltage:	28 V
Continuous current:	40 A / 80 A
Power:	2400 A / 4800 A
Capacity:	26 Ah / 52 Ah
Weight:	26 kg

Special modifications for each application



Accessories: Quick chargers

For common use of mobile devices Coolspool 17/19 (Twin) and GPU 1700/2400 (Twin) there is the fast charger to save long charging times. It charges the batteries quickly and safely while optimizing the maximum longevity.



Your advantages at a glance

- Frequent use of batteries
- Extended service life
- Minimized maintenance
- Fast recharging

Battery Ramp Cart

The combination unit for continuous and starting current serves as a mains-independent external current supply to relieve the on-board batteries of aircraft for maintenance work, training, flight preparation and and starting procedures. A special feature is the easy handling of the robust housing with four wheels and tow bar.



Your advantages at a glance

- High flexibility
- Hangar and Ramp
- Continuous power plus starting
- Weatherproof housing for maintenance-free batteries

	Coolspool 130	Coolspool 260	Coolspool 410
Voltage:	28 V		
Power:	4000 A	8000 A	4700 A
Capacity:	130 Ah	260 Ah	410 Ah
Weight:	157 kg	270 kg	500 kg

Suitable for medium and large 28 V aircraft and helicopters

Transformator Gleichrichter

The TRU-28 is a current rectifier that provides 28 V to the aircraft. Due to the main connection, it is possible to use continuous current virtually indefinitely and to start the engines.



Your advantages at a glance

- Flexible use
- Continuous power and starting
- No batteries
- Hangar and apron

	TRU-28
Voltage:	28 V
Continuous current:	600 A
Power:	2400 A
Protection-type:	IP55

Eigenschaften:

- Minimal AC ripple
- Digital display, dynamic steering wheels
- Low harmonic distortion of the entire input



Diesel power units

The JetGo provides continuous power and serves as a starting aid for aircraft engines. With this diesel GPU you get a 3-in-1 solution of main-independent continuous power through a diesel genset, starting aid batteries and continuous power in the hangar by mains connection, which can also be used in the hangar.

Your advantages at a glance

- Recovery old Jet A1 / JPB
- Hangar and apron
- Flexible power
- All DC helicopters
- DC regional jets and turboprops



	JetGo 900	JetGo 300
Voltage:	28 V	28 V
Continuous Power:	800 A	300 A
Tank:	132,5 Liter	33 Liter
Running time at 50% load:	25 h	14 h
Weight:	1354 kg	584 kg



115 V AC / 28 V DC Diesel power unit

The JetGo 45-400 AC power unit is a long-awaited development from our wide range of GPUs. This unit contains advanced active safety features for aircraft and delivers reliable performance to ensure optimum ground power. The JetGo 45-400 is for flexible use and covers a very wide range of applications. The Deutz diesel engine delivers 400 Hz / 115 V as well as an optionally available 28 V output at a power of 45 kVA.



Typical applications

- Flexible use
- For the Ramp
- One unit for everything
- AC and DC aircraft

	JetGo 45-400 AC
Power:	45 kVA
Voltage:	200/115 V, 28 V
Frequency:	400 Hz
Tank capacity:	132,5 l
Overload:	125 % (5 Min)
Weight:	ab 1.280 kg

Features:

- Fuel-efficient diesel hybrid design runs ~25 hours at 50% load
- Automatic voltage compensation
- Digital display
- Class 5 emissions without AddBlue
- Fully galvanized heavy-duty trailer with torsion suspension and fifth wheel trailer hitch

400 Hz Battery-GPU

The new battery-powered GPU provides up to 176 kWh for aircraft stationed at airports with limited infrastructure. A second output, which can also be assigned with 400 Hz or also 28 V, makes the GPU-409-iBS very flexible in use. A special data link enables accurate monitoring and communication of all devices.

Typical applications

- Mains-independent continuous power (mobile)
- CO₂-neutral
- 400 Hz / 115 V, optional 28 V
- Airbus, Boeing and other 400 Hz aircraft

	GPU-409-iBS
Power:	132, 154 oder 176 kWh
Voltage:	200 / 115 VAC
Power Factor:	0,7 lag – 0,95 lead
Frequency:	400 Hz
Efficiency:	> 95 %
Touraround (at 176 kWh by B737)	6,7
Loading time (at 125 A)	1 h 19 min



Eigenschaften:

- Automatic line-drop compensation
- 5-year battery warranty
- Many years of high battery performance
- Lithium-ion batteries (6, 7 or 8 batteries)
- Link for remote control
- Plug-in power module for quick maintenance
- Motorized or with tow bar



Sidwinder 2

The unique ground power transfer system is permanently installed yet flexible for power connection. "The power" can be ergonomically and quickly driven to the aircraft.

Ihre Vorteile auf einen Blick

- CO₂-free power
- Fixed locations at airports
- Airbus and Boeing models
- Extended cable and plug life



Eigenschaften:

- New drag-link pivot design für easy maintenance
- 1 or 2 x 90 kVA outputs
- 4-wheel brake system
- High-visibility reflectors
- Large, low-resistance wheels for effortless deployment

	Sidwinder 2
Available lengths:	12 m, 18 m, 24 m or other lengths
Installation:	Extendable left or right

Perfect combination with the PV90-4 and also with the 28VDC devices (TRU-28)



Mobile ground power converter

The PV45 provides 400 Hz and a total power of 45 kVA as a mobile converter. Thus, it is used as a continuous power device or starting aid with mains connection.

Typical applications

- Mobile for outdoor use
- Automatic line drop-compensation
- Easy operation with data memory
- For 400 Hz continuous current in hangars

	PV45
Power:	45 kVA
Voltage:	200 / 115 V
Power Factor:	0,7 lag – 0,9 lead
Frequency:	400 Hz
Efficiency:	> 91 %
Overload:	250 % (Spitze)



Ground power converter

This 400 Hz / 90 kVA electrical converter provides stable power even under extreme unbalanced loads, and its rugged stainless steel housing makes it suitable for fixed as well as a variety of mobile applications in hangars or Ramp.

The system is one of the few systems on the market that fully complies with the DFS 400 directive.

Because of the large user-friendly 5.7" LCD display, system monitoring and power selection is very easy to manage even in low light conditions.



Typical applications

- Single or dual channel 90 kVA
- Optional 28 V
- Airbus, Boeing and other 400 Hz aircraft
- Mobile or fixed installation

	PV90
Leistung:	90 kVA
Voltage:	200 / 115 V
Leistungsfaktor:	0,7 lag – 0,95 lead
Frequency:	400 Hz
Effizienz:	> 95 %
Überlast:	400 % (1100 A Spitze)



GPU Connector Maintenance & Test Kit

Properly functioning GPU cables are an important part of aircraft safety and maintenance. A damaged or broken cable connector can cause significant damage to the aircraft. This test kit can detect faults in AC (400 Hz) as well as DC (28 V) power plugs can be detected at an early stage.

This compact case contains:

- Temperature gauges
- Pin-inbus tool
- Electronic tension scale
- Measuring adapter
- Charger
- Brushes for cleaning the socket
- AC & DC pin tool
- E&F + DC analysis tool



O₂/N₂ Weighing – Oxygen / Nitrogen Service

The tiltable bottle rack enables easy as well as fast loading and unloading of the bottles. The regulators can be mounted effortlessly on the existing brackets of the robust and powder-coated steel frame.

Due to the integrated tow bar, the O₂/N₂-service-trolley can be towed anywhere without any problems.



O₂/N₂ trolley (Oxygen/Nitrogen)

- Booster in different versions
- 1-bottle hand cart
- 2-bottle nitrogen low-high pressure hand cart
- 2-bottle nitrogen hand cart (complete)
- 2-bottle oxygen hand cart
- 2-bottle oxygen hand cart (complete, hangar)

Your advantages at a glance

- Transportation of oxygen and nitrogen cylinders
- Booster from cylinder or compressed air system
- With tow bar or manual traversing
- Weighing for 2-, 3- and 4-cylinder systems



Fresh & dirty water service carts

The developed Lavatory Carts stand for high quality, highly intelligent design and ensure short waiting times at the airfield.

Due to a simple as well as fast maintenance and the associated cost savings, our system can convince in the hall as well as on the Ramp.

Also our fresh water carts for water filling with safety tank are available in different models.



Your advantages at a glance

- Waste water from on-board toilet and kitchen
- Fresh water filling
- Short waiting times
- Safety tank
- Very close to the aircraft with tow bar am Flugzeug

Dirty water service cart

Gerätetyp	Abwassertank	Frischwassertank	Pumpentyp
LC60	132 l	106 l	Hand/Elektro
LC100	257 l	129 l	Hand/Elektro/Benzin
LC180	416 l	265 l	Elektro/Gasoline or diesel
LC270	644 l	379 l	Elektro/Gasoline or diesel

Fresh water service cart

Gerätetyp	Frischwassertank	Pumpentyp
WC30	114 l	Hand/Elektro
WC80	303 l	Elektro
WC100	379 l	Elektro
WC180	681 l	Elektro/Gasoline or diesel
WC270	1022 l	Elektro/Gasoline or diesel



TOW BARS SOLUTIONS

Tow bars/heads

We also supply our tow bars in different designs for the specific type of aircraft or helicopter. You can choose between fixed or bars with interchangeable head (multi-head) and coupling.

Our tow bars with intelligent technology are used at airports for regional, military, narrow body, wide body, FBO, MRO and general aviation applications worldwide.



Flat Tire Dolly

This tire cart is specially designed for aircraft with flat tires, so that anyone can recover an inactive aircraft alone, in a short time from the runway or taxiway.

Your advantages at a glance

- Handling of aircraft with flat tires
- Ramp quickly available again
- Up to 8 t load capacity
- For nose, tail or main landing gear



Brake pads

Designed for large and small aircraft, these wedges are naturally resistant to UV, compression, skidding, oil and weather.

They are made from 100% recycled post-consumer rubber. Each pair of chocks is connected by a yellow rope.

Product Assortment:

- 12-Inch Wheel Chock Holder
- 24" Wide-BodyJ 52" Super-Heavy
- 52" Super-Heavy
- 8" GA Rubber, extra small
- GSE-Truck Urethane, yellow
- Large 24" Rubber, Reflective Strip
- Medium 18" Rubber, Reflective Strip
- Small 12" Rubber, reflective Strip
- W74 Pushback Tractor





Lineares Kraftüberwachungssystem

The SiPsHitch system is a revolutionary safety system that can protect aircraft, in overload situations from damage during a towing operation. This often happens when using tugs that have a significantly higher towing power than the aircraft's rated towing power.

Unintentional overloading of the nose gear can result in expensive damage or time-consuming inspections. This can be avoided by SiPsHitch. Because SiPsHitch continuously measures the towing force, a permanent exceeding of the permissible towing force at the nose wheel is impossible.

Should a tractor nevertheless exceed the permissible towing force, SiPsHitch warns the driver. If the selected towing force of the aircraft is exceeded despite the warning, the SiPsHitch blocks the towing process, which can then only be advanced by the release of the supervisor.

The aircraft-specific towing powers are stored in the system.
The SiPsHitch is integrated directly into a tractor.



Your benefits at a glance

- Models for more towing load, voltages and trailer hitch position (front / rear)
- Prevents costly ramp accidents by indicating possible overload situations
- Interactive software for display and configuration of detailed towing data and towing based on aircraft model

TRANSPORT TROLLEYS

Tire Service Trailer

With the service trailer for changing aircraft tires are safely loaded and transported. The side ramp allows convenient parking next to the aircraft and very ergonomic loading. The non-slip cart floor is used for the stability of the personnel and tires.

There is an additional space for customer adaptations for e.g. holders for N2 bottles or tool boxes.



Your advantages at a glance

- Heavy-duty truck
- 3.6 t capacity
- 5-wheel steering
- Pneumatic tires
- Spring-loaded ramp
- Customization



Baggage and Cargo Carts

The Baggage and Cargo Carts, which are equipped with pneumatic tires, can be fitted with tarpaulins. This and a stable tow bar ensure safe transport of the luggage. Due to the braking device integrated in the cargo trailers, they can transport over 13,5 tons safely.

Your advantages at a glance

- Manually operated stops
- Spring-loaded
- Anti-slip walkway
- Rollers for easy loading and unloading



STEPS AND LADDERS

Maintenance platform and passenger stairs

The maintenance platform and work access stand is an updated, improved version of the longstanding standard B-1 maintenance platform used by the Air Force. Various designs provide access for maintenance and into the passenger compartment.

Your advantages at a glance

- Height-adjustable work platform
- Non-slip, self-cleaning steps and platform floor
- Double-acting hydraulic hand pump
- Heavy-duty casters and 16-inch pneumatic tires
- Railing can be lifted out and and stowed
- Inclined stairs - base, stairs and platform remain parallel at all height position parallel



Refueling platform

These aircraft refueling maintenance stairs are designed to accommodate diverse patterns in tight spaces.

The adjustable access for narrow and wide bodies is raised and lowered hydraulically. Of course, all safety-relevant aspects are taken into account.

Typical aircraft

- Embraer ERJ 190-195
- ATR (alle)
- BA 146 Airbus A300, A310, A318, A319, A321, A330, A340
- Boeing/McDonnell Douglas 747, 757, 767, L1011, DC10, MD11



PortaPump - Mobile field filling station

The Portapump serves as a mobile refueling station for refueling your helicopter or fixed-wing aircraft.

The fuel is filtered during refueling and defueling. This refueling station can be used anywhere due to its size and ease of use.



Specification:

- Weight: 27,5 kg
- Dimensions: 360 x 330 x 490 mm
- Voltage: 27 – 28 V (optionally 12 V)
- Peak current: 14 A
- Power: ca. 350 W
- Pump capacity: 100 Liter per minute

Portapump consisting of:

- Pump with fine filter in housing
- Suction hose, approx. 3 m
- Suction pipe with coarse filter
- Grounding cable, approx. 2 m
- DC connection cable, approx. 3 m
- Filling hose, approx. 3 m, with filling nozzle and valve



Your advantages at a glance

- Mobile and flexible use
- Refueling without infrastructure
- Refueling with on-board power
- Refueling with 230 V
- Compact and lightweight
- Can be used quickly
- Can be combined with various GPUs
- Diesel or kerosene
- Compatible with mobile GPUs



Hydraulic test stand

Standard features include a digital interface, a screen for data and programmable parameters for airframe service.

This makes the unit the safest on the market. The HPU is configured to your application.



Your advantages at a glance

- Mechanical tests via hydraulics
- Aircraft maintenance work
- Quiet and efficient use
- Simple operation
- Save data in Excel file
- Various sizes / versions available

	Size 1	Size 2	Size 3	Size 4
Max. Flow rate	23 LpM	90 LpM	177 LpM	227 LpM
Fluid type:	Mineralbasis, Skydrol Typ IV oder V	Mineralbasis, Skydrol Typ IV oder V	Skydrol Typ IV oder V	Phosphat-Ester
Max. pressure:	207 Bar	241 Bar	275 Bar	275 Bar
Weight:	181 kg	692 kg	1225 kg	2722 kg

Axel Jacks

These jacks are used for lifting aircraft for maintenance purposes. The rugged jacks are designed to withstand harsh conditions and provide years of service. Axle jacks are available in a variety of configurations with units of 12, 25 and 35 tons. These hydraulic jacks feature steel construction, a manual hand pump, safety valve and hydraulic fluid. In addition, the fill and bleed cap is easily accessible to prevent damage from fluid leakage.

Your advantages at a glance

- Aircraft maintenance
- Changing tires
- Working on the brake unit
- Servicing the wheels
- Raising the main or nose landing gear





Optical micrometer 8400K

The 8400K Optical Micrometer is a measuring instrument that allows damage to surfaces to be surveyed very quickly.

The surface change is detected and cracks are validated. With this measurement system you will accurately determine the depth of scratches, nicks and grooves.

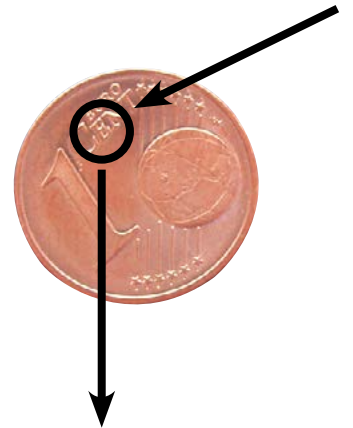
Your advantages at a glance

- Fast depth measurement
- Detecting surface structure
- Width measurement
- Tolerance determination
- Non-destructive testing



Specifications

- Accuracy: +/- 0.001" (+/- 0.02 mm)
- Resolution: 0.0005" (0.01 mm)
- 10 X Lens - Maximum Depth: 6.4 mm
- 4 X Lens - Maximum Depth: 32 mm
- Use Temperature: 0 °C – 40 °C
- Storage Temperature: -10 °C – 60 °C
- Calibration: all 12 month



The letter "E" on a 1 cent coin.

The difference in height is exactly 0.05 mm from the base.

Here, corrosion damage to A320 rims is measured.



Lab Stand 5500L

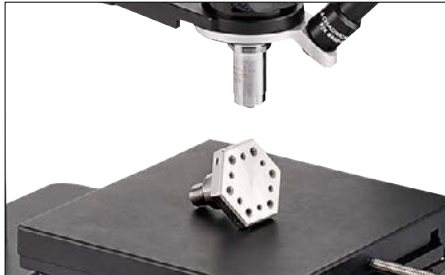
The Lab Stand 5500L is an optional accessory for the 8400K Optical Micrometer. It is not always possible to measure every shape of objects with the micrometer. With the Lab Stand system, you can find small and shapeless objects very easily through the micrometer.

Capabilities

- Optional accessories for the 8400K
- Enables the measurement of shapeless and small objects
- Capabilities of the micrometer are not affected

Your advantages at a glance

- Fixed positioning
- Very fine measurement
- Precise alignment
- Very easy handling



Surface Replication Kit 4400M

If you want to measure hard-to-reach places with the 8400K Optical Micrometer, the 4400M Surface Replication Kit is a suitable tool. Using a two-component compound from a manual glue gun, the negative impression of the surface can be measured and archived very easily, making it ideal for many industrial applications.

Capabilities

- Accurately replicate surfaces
- Generates a negative of a damage
- Very accurate impression due to two-component adhesive
- Measure and evaluate with the 8400K Optical Micrometer

Your advantages at a glance

- No disassembly of components
- Convenient tabletop measurement
- Replica creation
- For hard-to-reach surfaces



Microscope Digital Camera 3300C

The Microscope Digital Camera 3300C is the perfect accessory for the Optical Micrometer 8400K if you want to save and document the images of the damage.

Capabilities

- Document screenshot
- Visible to everyone, everyone sees the same image
- Perfectly adjustable through image editing
- USB interface
- Automatic brightness adjustment

Your advantages at a glance

- Live image on the screen
- Save / document the images
- Record videos
- Edit images with the software
- Rate interface in the team

Additional Feet

Use these interchangeable feet for a variety of inspection applications with the 8400K Optical Micrometer.

Stand feet are available with rubber studs, offsets, in larger size and with two feet.



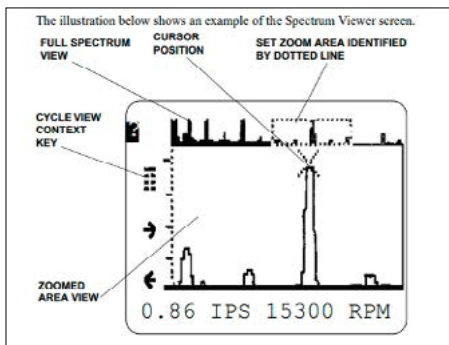


Your advantages at a glance

- Improve service
- Reduce vibrations
- Find faults
- Save costs
- Increase service life
- Increase comfort

Capabilities

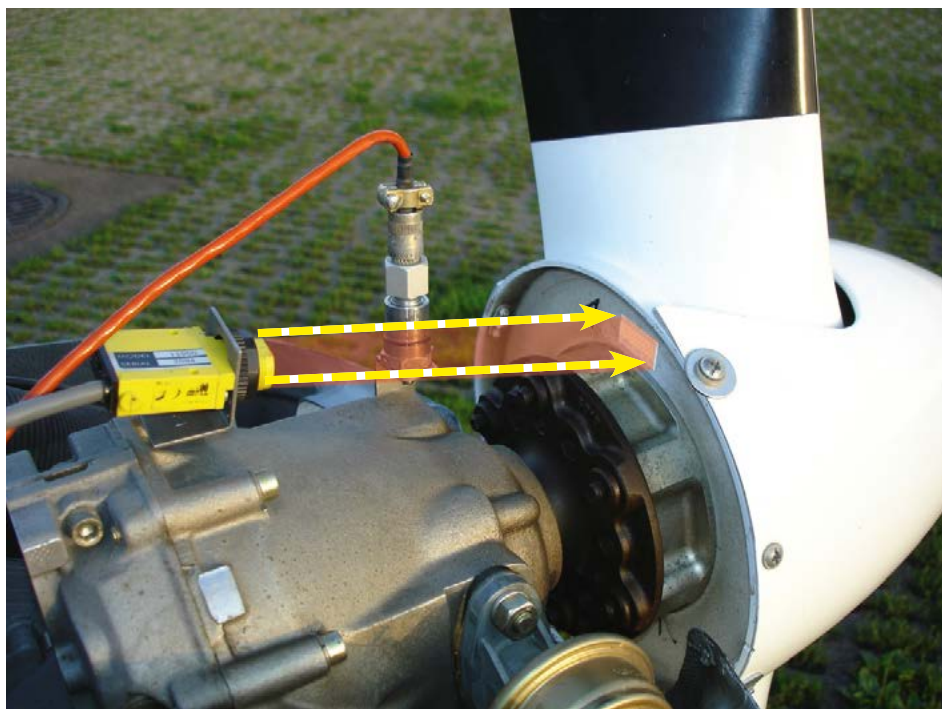
- Automatic calculation
- Suitable for propeller engines
- Manual balancing also possible
- Two channels can be used
- Documentation via software on PC



Vibrex 2000 plus (V2K+)

The Vibrex 2000 plus is a vibration and tracking measuring device that you can use regardless of the type of machine you are using.

This reliable measurement system calculates and analyzes the unbalance on your rotor or propeller over a wide frequency range. Global Aviation Systems supplies you the right accessories for your aircraft.





Your advantages at a glance

- Up to four velocimeters can be used
- Upgrade from V2K+ to new EV2K+ possible
- Automatic calculation through charts
- Very convenient to use



EV2K+ (Enhanced Vibrex 2000 Plus)

The EV2K+ is a handy vibration and tracking measurement system with vibro analysis. This sophisticated device bridges the gap between the Vibrex 2000 (hardware) and the VXP (software) and is specifically designed for helicopter solutions. In addition to the full function of the Vibrex features, the EV2K+ has other special features.

Features:

- Automatic calculation of setting suggestions
- Automatic tracking measurement with FasTrak
- Charts of the 26 most important helicopter types are stored
- Charts of the 35 most important fixed wing aircraft types are stored



Deposited Helicopter Charts:

A 109E	AW 139	BO 105	MD 520N
A 119	BK 117	EC 120	R 22
AS 332	BL 206B	EC 130	R44/R66 S 61
AS 350B	BL 206L	EC 135	SW 300
AS 350B1	BL 212	EC 145	UH-1H
AS 355 M/R	BL 407	EC 155	
AS 365	BL 427 M/R	MD 500	

Deposited fixed-wing aircraft charts:

Antonov AN-32	Cessna Conquest	Pilatus PC 6
ATR 42/72	Dehavilland Dash 4	Pilatus PC 7
BA BAE 146	Caribou	Pilatus PC 9
Beechcraft 1900D	Dehavilland Dash 5	Pilatus PC 12
Beechcraft Bonanza	Dehavilland Dash 6	Piper Cheyenne
Beechcraft King Air Series	Dehavilland Dash 7	Saab 340
Canadair CL215-T	Dehavilland Dash 8	Shorts 312
Canadair CL415	Dornier 228	Shorts 330
Casa 212	Dornier 328	Shorts 360
Casa 235	Embraer 120	Shorts Tucano
Casa 295	Embraer Tucano T-27	Sweringen Merlin
Cessna Caravan II	Lockheed C-130 (J only)	





VXP Carry-On

With the VXP system, all measurements are taken fully automatically in terms of Vibration, unbalance and tracking and can therefore be used for your entire, even non-uniform, fleet.

The long - standing development of the "Advanced Smart Chart" is the further development of the thousand-fold used 8500 (+) and is therefore also compatible. The VXP consists of a Basic Kit and the respective Application Kit, which is assembled for the specific helicopter or aircraft type.



Features of Advanced Smart Charts:

- Windows user interface (touch screen)
- Measurement of operating states in any order (where useful)
- Graphic display of stored balancing processes on the Display Unit (DU)
- Reloading of balancing data to the Acquisition Unit (AU)

Why balancing?

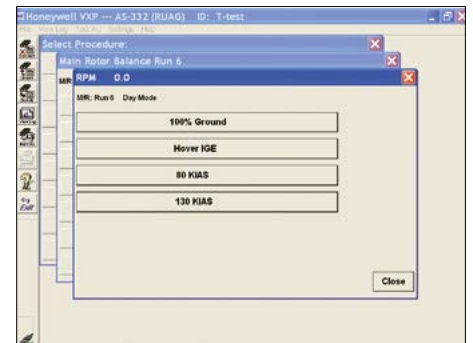
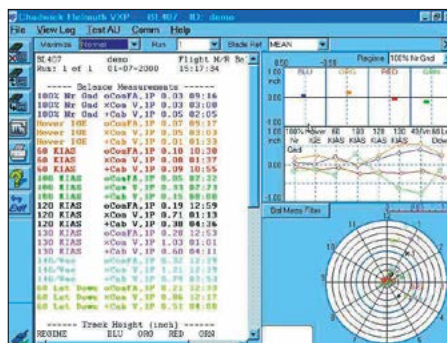
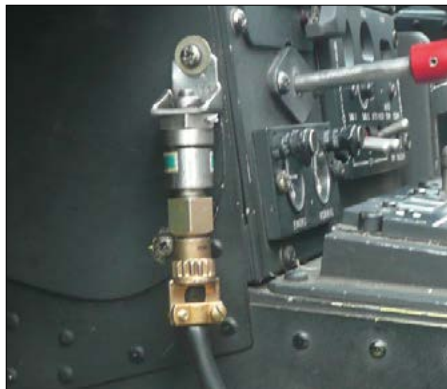
- Low-vibration flight thanks to blades that are as identical as possible
- Significantly reduced material wear
- Very sensitive due to smallest changes
- Balancing - like car wheels
- Track - blades on one level

When to balance?

- Upgrading a new blade set
- Replacing individual blades
- After a certain number of flying hours
- Balancing - like car wheels
- Vibrations in flight

Your advantages at a glance

- Balancing rotors and propellers
- Simultaneous measurement of vibration and tracking
- Automatic calculation by software
- Windows-based display unit
- Consideration of measured suggestions
- Modifiable solutions
- Arbitrary order





VXP On-Board

This system is used by fixed mounting in aircraft for all vibration, unbalance and tracking measurements and can collect the data fully automatically and at the same time.

The VXP-ON Board is also suitable for helicopter types where VHM or HUMS are mandatory.



Suitable accessories for balancers:

- Basic units
- Cables
- Sensors
- Software and manuals
- Sensor mounts
- Useful accessories

Our service for you:

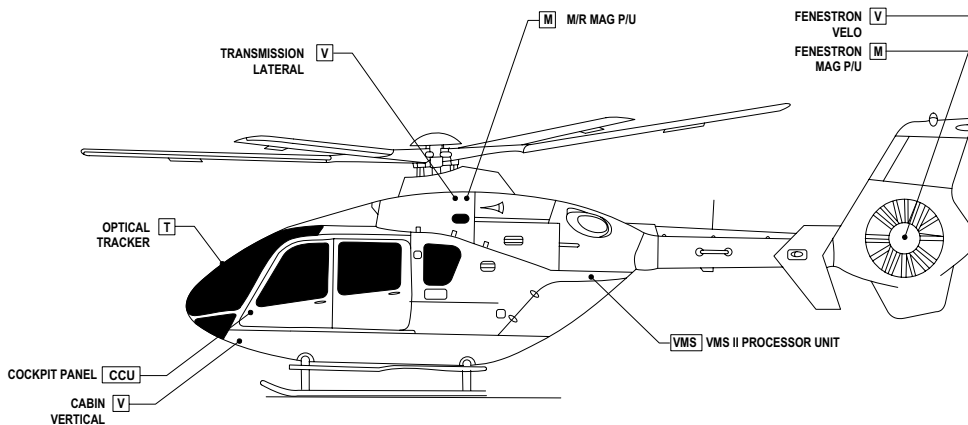
- Calibration of balancing systems
- Training and education
- Demonstrations
- Support through loaner systems or parts
- Assembling kits for your fleet
- Repairs
- Repurchase option of old equipment
- On-site visits
- Development of new solutions
- Provision of spare parts
- Modification for your application

Your advantages at a glance

- Reduced service times
- Rework off-board
- Respond quickly to events
- Ready to go at any time
- No equipment setup and teardown time



EC135 VMS II COMPONENT LOCATION DIAGRAM





Highly stabilized, electro-optical infrared camera systems

L3 Harris camera systems with EO/IR sensors are ideally suited for reconnaissance and surveillance of various scenarios due to their high stability and very long range. Because of the excellent quality and useful functions, they are a great help for the user.

In addition to the camera systems of the MX series, we also provide training courses over several days for the operation of the devices and service in the form of maintenance and repair at our facility in Donauwörth. Global Aviation Systems provides an authorized service center for you with trained employees so that your system can be used optimally.

Your advantages at a glance

- Border surveillance
- Police applications
- Highly stabilized HD image from the air
- Ready for use at any time
- Target localization
- ITAR-free version.

Mission Displays and Computers

Rugged monitors used specifically for tactical missions in aircraft, ground stations, vehicles and ships. The high quality standard is the prerequisite for reliable image and information reproduction.

Your advantages at a glance

- Many sizes: 7" - 24"
- NVI and sunlight readable
- Custom touchscreen
- In- / Output selection
- MIL-STD certified





ESM – Direction Finding

Electronic Radar Support Measure systems are for surface and underwater marine applications. High-performance Electronic Support Measure (ESM) systems are essential for successfully operating in an electromagnetic situation during a modern mission.

A passive radar detection for surface and underwater ships enables real-time analysis and response to a wide range of changes during a mission.

Features:

- Real-time
- Detection and Tracking
- Windows HMI
- Frequency 2 - 18 GHz
- Direction Finding over 360 °



Satellite communication

Our SatCom solution uses GEO satellites for an extremely high bit rate. Mission aircraft are enabled to transmit large amounts of data efficiently and with low latency.

Especially for helicopters, the communication solution proves itself with a rotating rotor system with several interruptions per revolution. The Ku-band transmits the data without significant losses.

Features:

- High bandwidth, despite rotor revolutions
- Internal stabilization
- Complete solution for mission
- HD video and audio streams

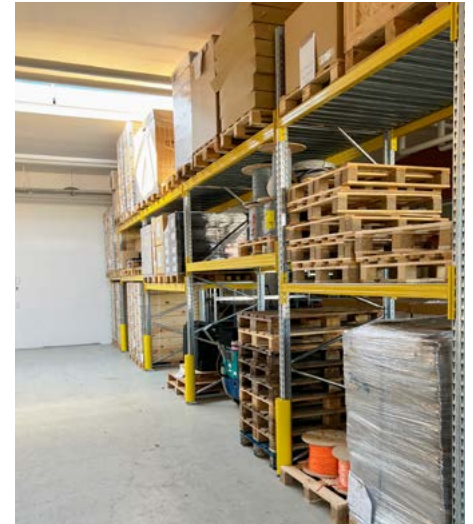




Service

Even after the purchase of a device still our fullest support. We are your first contact for repairs, maintenance and much more. With our Authorized Wescam Service Center we can not only offer you electro-optical camera systems, but also maintain or repair them down to the smallest detail.

With a very well equipped warehouse, many maintenance or repair times are greatly reduced. Your service - request can, because of our service center, with us in Donauwörth can be carried out



Benefit from:

- Wescam Service Center for EO / IR camera systems
- Calibration of your system
- Loan units for pre-testing
- Fast service for maintenance / repairs / conversions
- Repairs (also on site)
- No export from the manufacturer



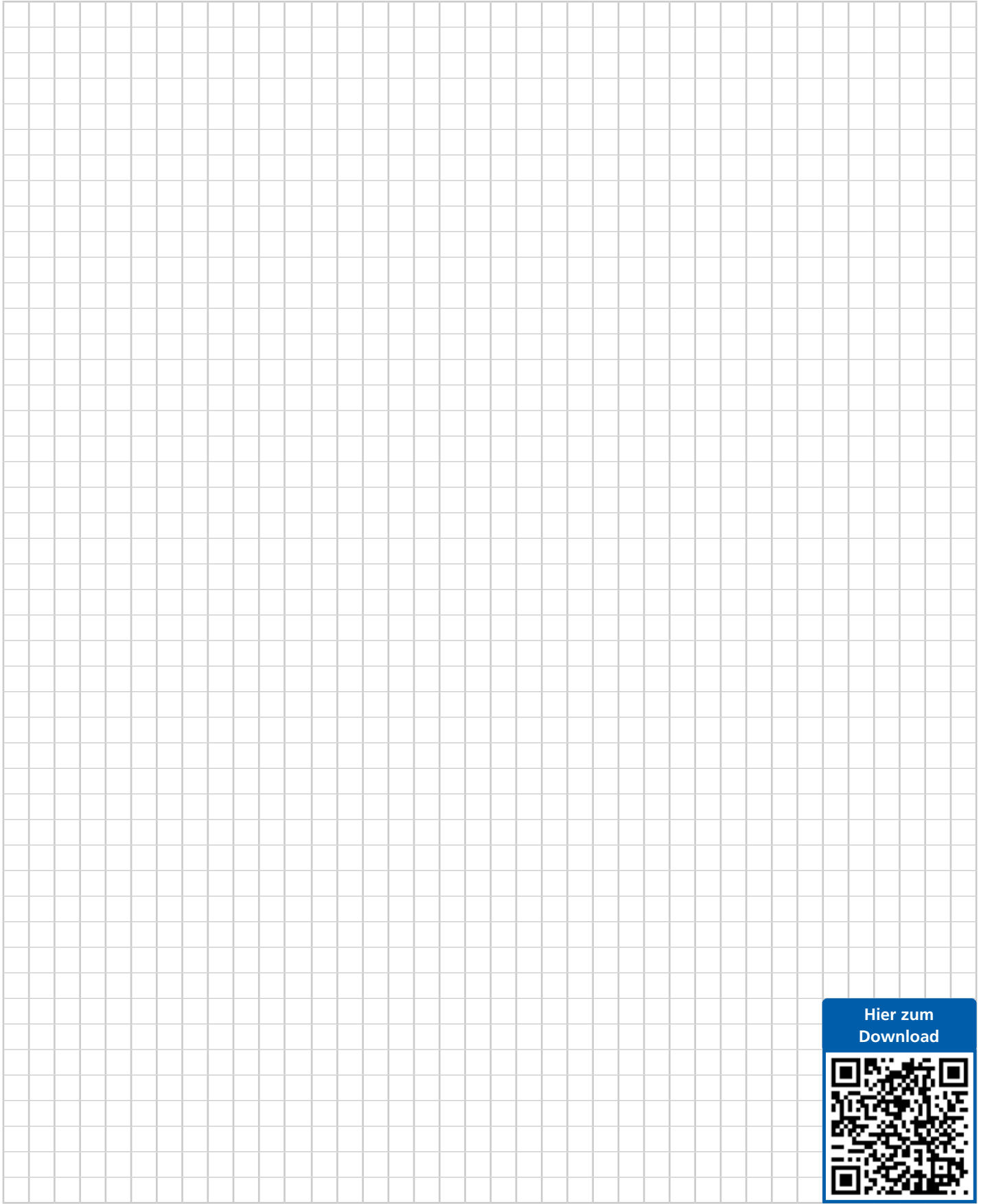
Advicing

You will not only receive selected products from us, but also professional technical advice. In this way, we ensure that you purchase the right system for your applications and requirements. Because a satisfied customer is our greatest concern.

Benefit from:

- Consultations during on-site appointments
- Personal support throughout the entire project
- Creation of complete solutions
- Live demonstrations
- Briefings / training / education





Hier zum
Download





Global Aviation Systems GmbH
www.theaviationexperts.de

Am Stillflecken 1
info@theaviationexperts.de

86609 Donauwörth
+49 906 127984-0